



2022

.....3

.....12

.....14

.....16

.....17

.....18

.....19

.....20

.....21

.....23

2022

	Shanghai Supezet Engineering Technology Corp., Ltd.
	2002 7 29
	2017 4 14
	20,266.6667
	88 1-30 104 4 D
	268 3 6

1

1

		2021-12-31	2020-12-31
		672,670.15	637,767.71
		473,359.58	552,372.84
		199,310.56	85,394.87
		185,095.54	67,927.02

2

		2021	2020
		390,088.66	272,750.68
		34,676.57	28,633.84
		33,830.09	28,584.18
		28,271.75	24,413.63
		31,524.57	24,843.99

3

		2021	2020
		-6,997.81	14,127.00
		-35,673.28	-69,839.95
		70,944.67	69,775.38
		28,157.72	14,044.24

2

1

2

9

2010

		%	/	/

2021

1

2

1

2

3

3

1

2

3

4

2022

5

6

A 1.00

2022 11 8

13.57 /

80%

=

/

$$P1 = P0 - D$$

$$P1 = P0 / (1 + N)$$

$$P1 = (P0 - D) / (1 + N)$$

P0

D

N

P1

$$= \quad /$$

41,252.80

13.57 /

3,040.00

30%

41,252.80

2022

2011

	600919 A	603103
A	603203 A	688121
A	600372 2011	300273
2014	300382	

36

12

12

36

638

5

021-35082198

021-35082151

2008

603203 A

601899 A

600498 A

600280 A

688121 A

600844

600426

000830

000989

300382

36

12

12

36

638

5

021-35082056

021-35082151

688121 A 2022 10

300382 300382 688121 A
2022 10

300511 688121 A 300382
2022 10

688121 A 2022 10

638 5

021-35082198

021-35082151

1.09%

10

7%

2023 2 20

119

7

3-2-17

2022

1

2

3

4

5

6

7

8

2022 11 7
A
<2022
A
A
< >
A
2022
A
2022-2024

2022 11 23 2022

2022

2022

" " " "
" "

1

8

2

8

" "

1

2022

A

8

2

8

3

8

4

8

	2
1	1
	2
	3
	4
	5

	6
	7
	8
	9
	1
2	2
	3
3	
4	
5	
	1
	2

	3
	4
	5
	6

2022

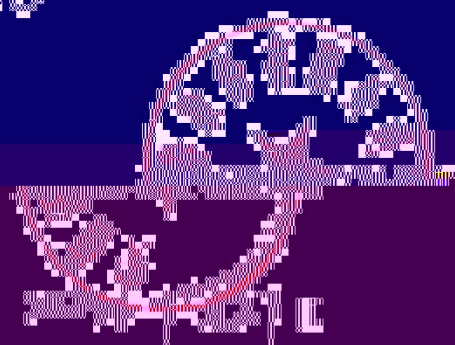
(此页无正文，为《安信证券股份有限公司关于上海直然工程咨询有限公司有限公司

3-2-25



2022

（此页无正文，为《安信证券股份有限公司关于江苏华然工程技术股份有限公司
2022年度科创板向特定对象发行股票之上市保荐书》之盖章页）



(此页无正文)